



# Double Degree Program

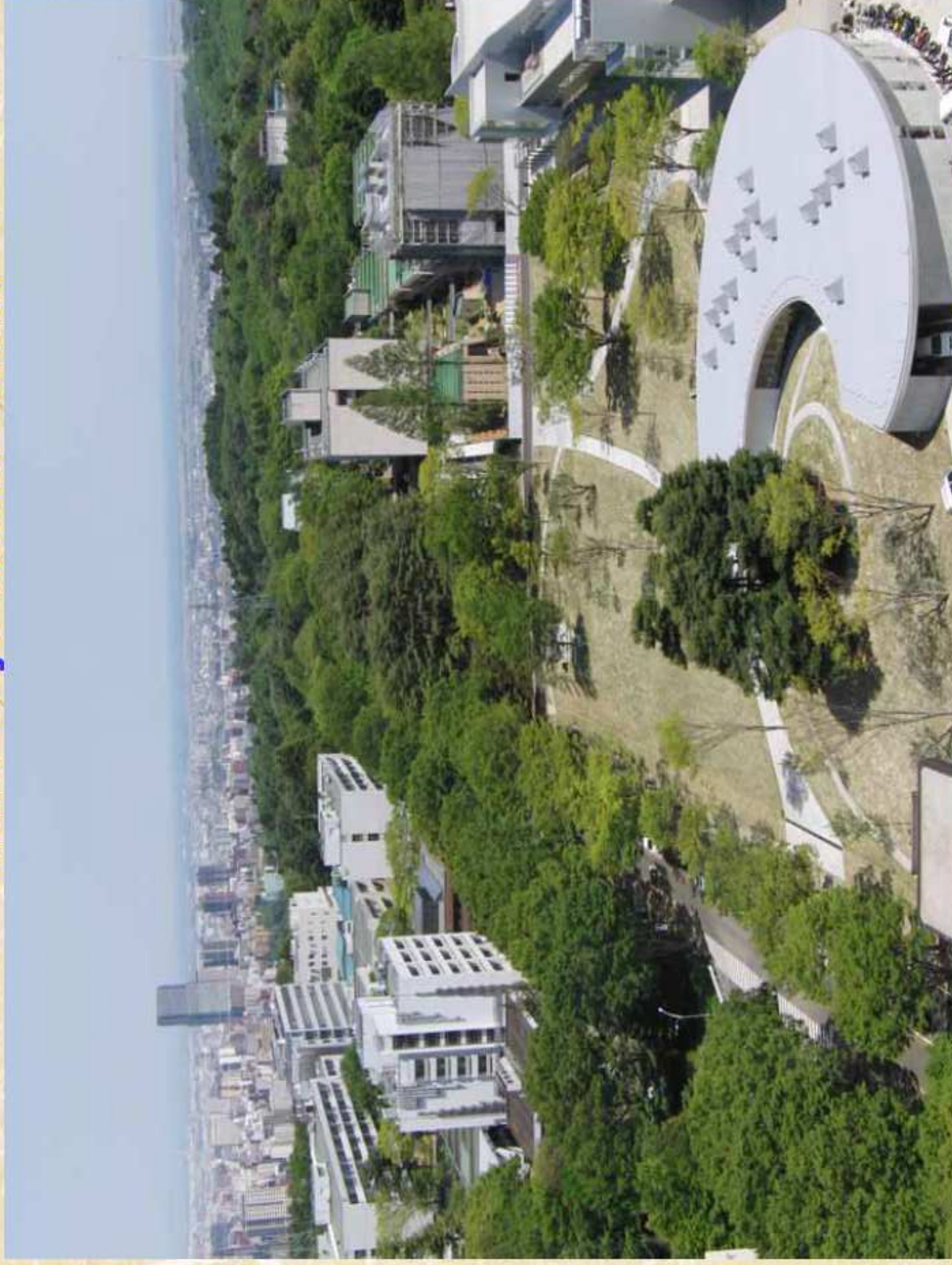


- Narita Airport ↔ Sendai Airport : 1 hour (by airplane)
- Sendai Airport ↔ JR Sendai Station : 40minutes (by airport limousine)  
(about 25 km)
- Narita Airport ↔ JR Tokyo Station : 1 hour (by train)  
(about 60 km)
- JR Tokyo Station ↔ JR Sendai Station :  
(about 350 km)  
2 hours (by Shinkansen Superexpress)



**Sendai is located about 350 km to the northeast of Tokyo.**

# A Bird's Eye View of Sendai



Aobayama Campus





**Graduate School of Agricultural Science**



**Graduate School of Engineering**



**Center for International Exchange**



**Graduate School of Science**

## Background of the INSA/ T.U. link



- Research cooperation since 1995
- Liaison offices, LIA (2009), UMI (2016)
- ELyT School (every year)
- Materials, mechanics, energy, biosciences...



A DD becomes a relevant milestone  
within the frame of such cooperation



# What is a D.D.?

A DD provides numerous advantages:

- double competence
- double culture
- maturity and open-mindedness



An added-value in your CV

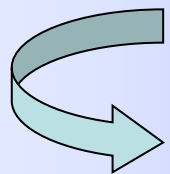




# Why a D.D.?

Because it responds to companies needs:

- Top-level technical skills
- Ability to speak foreign languages
- Ability to work in international teams



in a changing world-wide business market



1: 2024-25	INSA	4rd INSA
2: 2025-26 6months	TU	Sept-march: Japanese language intensive courses
3: 2 years From april 2026 to march 2027	TU	Master Course 1-2 + final dissertation with INSA/ TU requirements (>14 weeks of Industry internship for INSA)





# To remember

- **Research oriented Master/DD**
- **6 applicants only !**
- Few courses, mostly research in a lab
- Find a « good » lab: **elyt-lab.com** can help you to find a japanese lab in link with INSA lab. It is recommended to have agreement with Lab before selection (December 2024)
- 1,5 years more than standard INSA cursus (5yrs)
- JASSO grant (you can apply when you are in Japan, ~500 €/month during 1 year)
  - Be careful: not sure you can get it
- Bourse Explora

# Degrees obtained



- T.U. Master degree
- INSA de Lyon Diplôme d'ingénieur (Master of Engineering)



# How to proceed?



Contact Alain Fave <a href="mailto:alain.fave@insa-lyon.fr">alain.fave@insa-lyon.fr</a>	Now Moveon application
CV + 2 letters of recommendation + transcripts + B2 certificate (english)	January 2024 6 applicants
Interview (if necessary)	January-February
Selection results	March
Japanese course at TU	6 months sept-march
Master courses start	April 2025 (sept 2024)
Diplomas	March 2027 (august 2027)